

500 ATLANTIC

CONDOMINIUM



Live Life at The Top



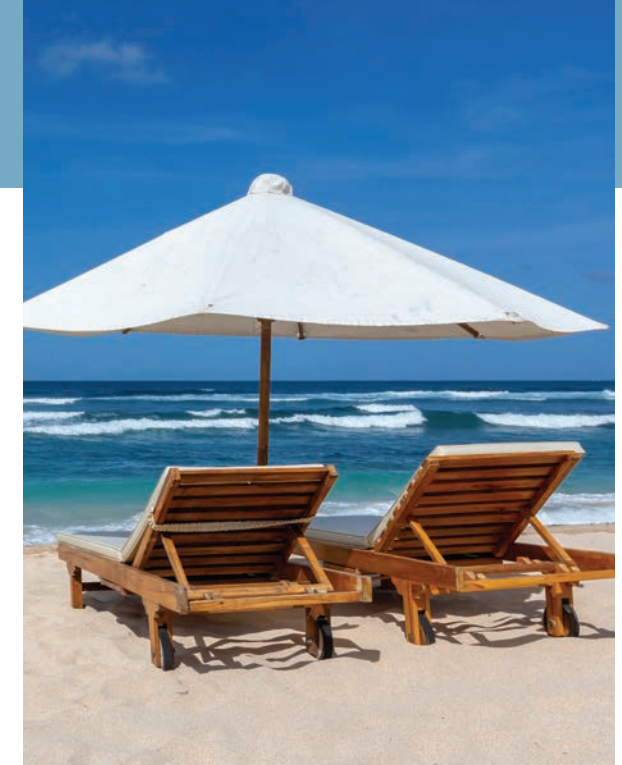


The View from the Top At The World's Most Famous Beach

500 Atlantic Condominium is all about the views. From the unique vantage of the tallest residential building on the Florida coast between Jacksonville and the Palm Beaches, every residence showcases vistas of sea and city – be it the day dawning

over the sweep of the shore break or the evening lights shimmering along the Intracoastal Waterway.

Featuring open flowing floor plans and luxury appointments throughout, 500 Atlantic's seaside salons, condominiums and world-class penthouses offer an experience unlike any other. On the ground and on high, two grand decks provide

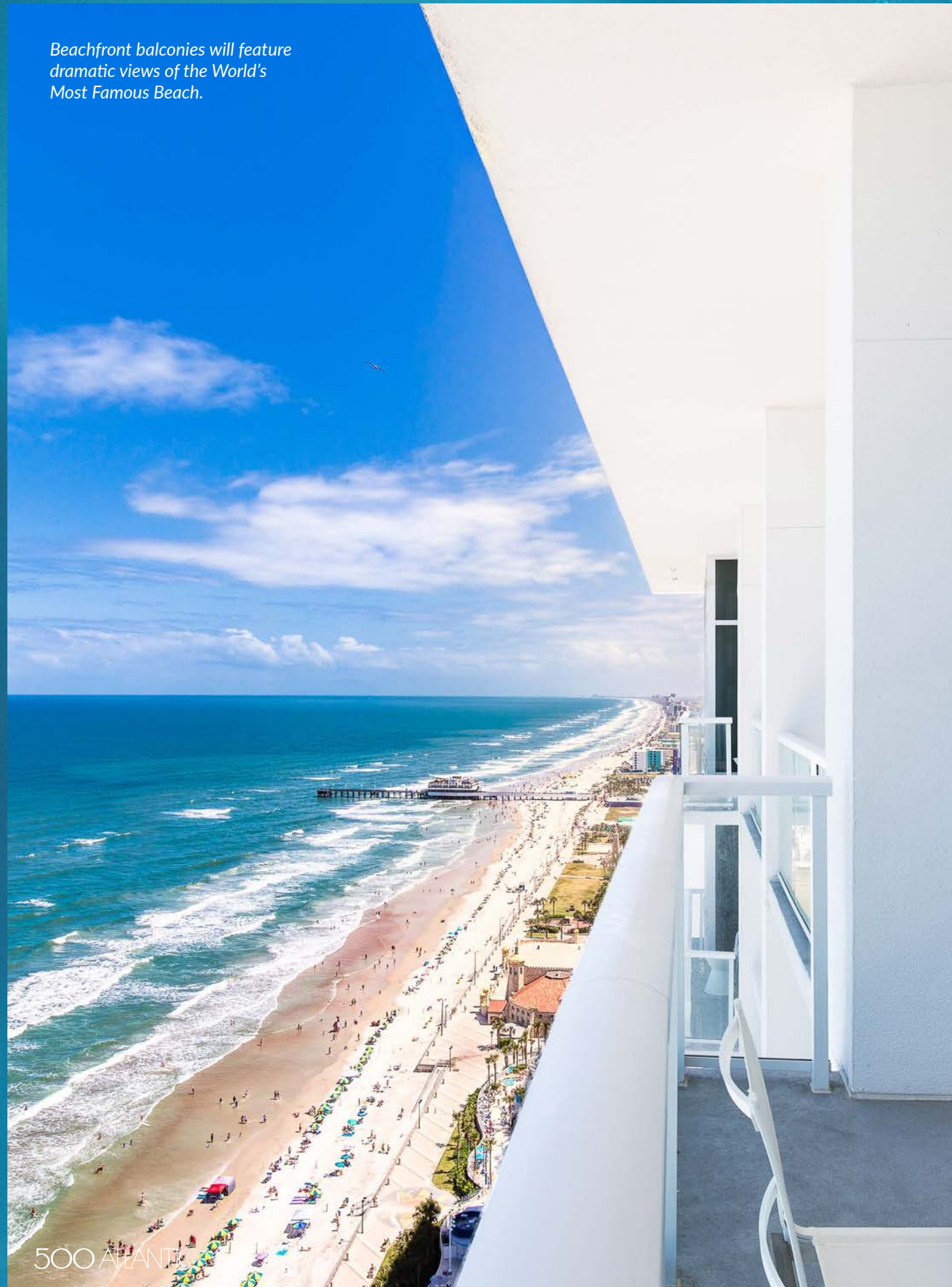


unique ocean views and two resort-style pools, an oceanfront Fitness Center, Juice Bar and Lounge, a yoga and dance studio, game and media rooms, and even an area for private wine storage.

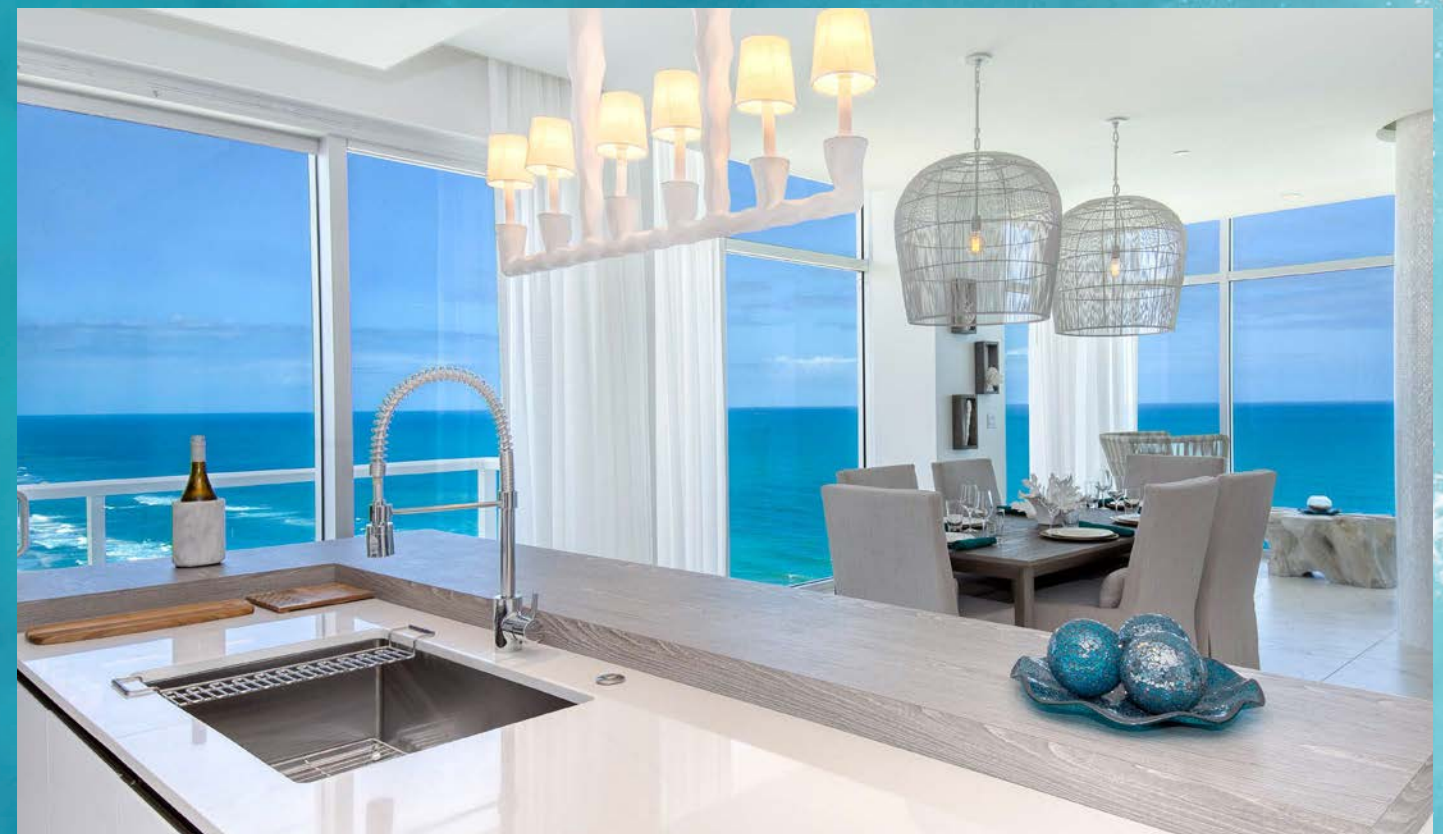
Joined on the second floor via an enclosed walking bridge, the 4-star Daytona Grande Hotel offers dining, room service and housekeeping options to all 500 Atlantic residents. With the Daytona Beach International Airport only 15 minutes away and the excitement of Daytona Beach at your doorstep, every need and want is right at hand.



Beachfront balconies will feature dramatic views of the World's Most Famous Beach.

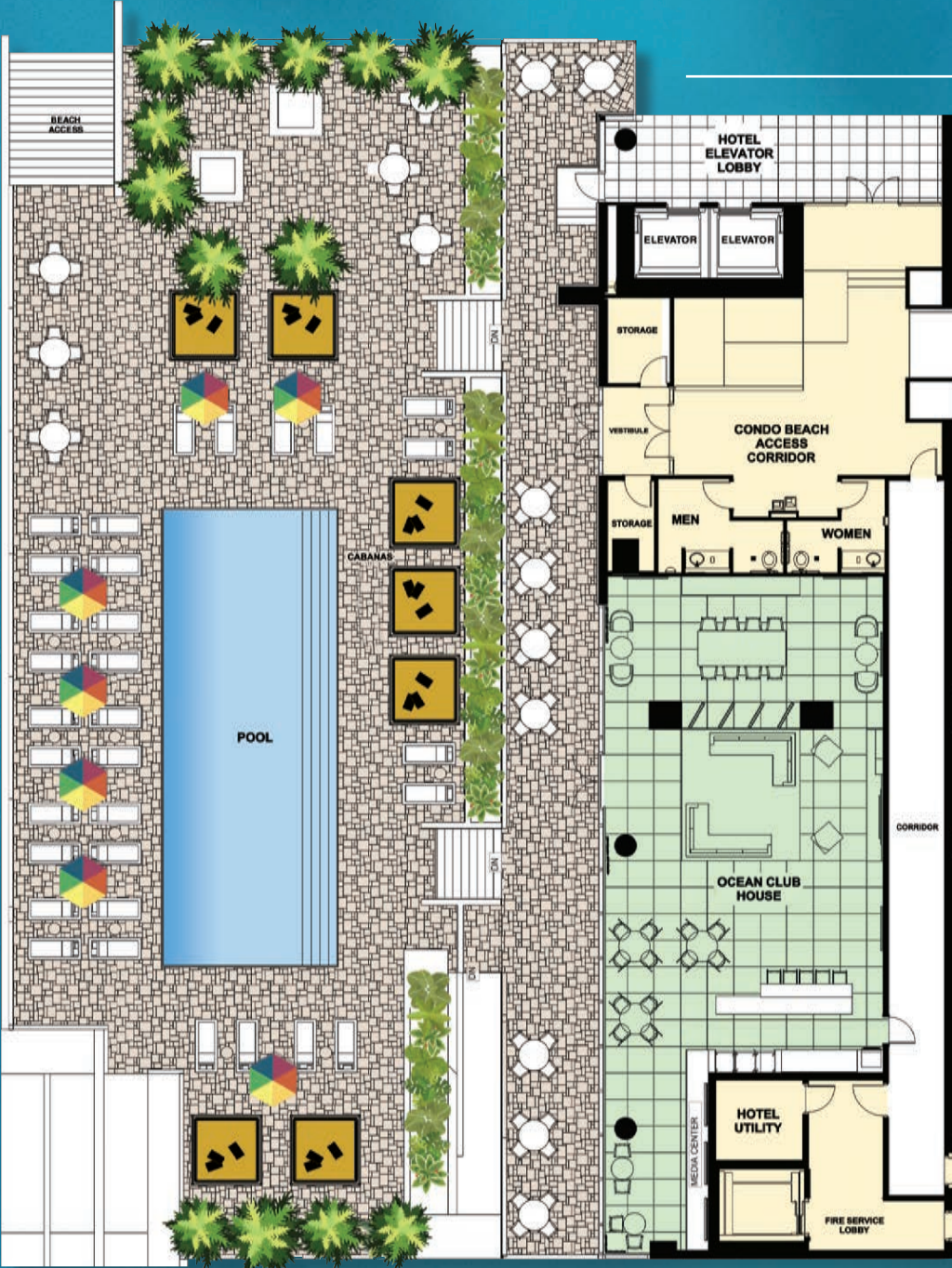


Interiors are open with floor-to-ceiling windows to maximize the breathtaking views.



Luxury Amenities & Services

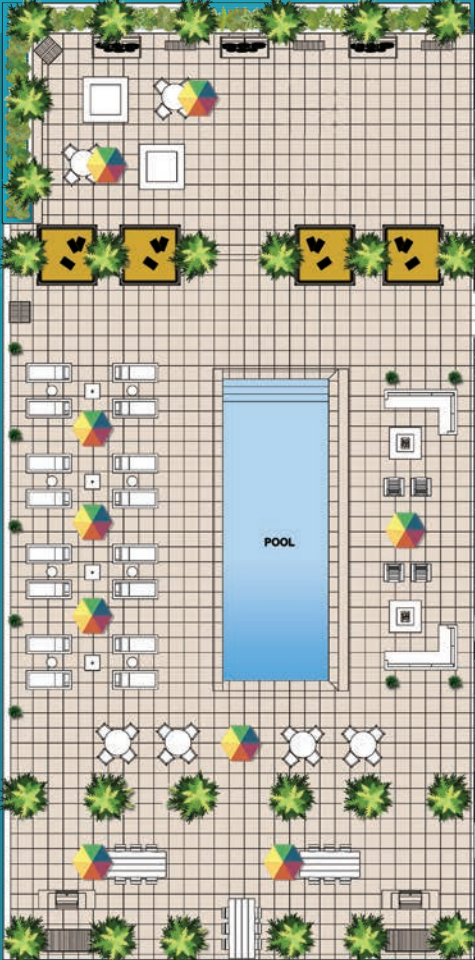
Atlantic Ocean



LEVEL 2 Amenities

500 Atlantic Condominium was designed to satisfy the desires of its discerning owners. 500 Atlantic offers its residents the unique opportunity to indulge in a long list of services provided by the adjacent 4-star Daytona Grande Hotel including:

- Room service provided by the hotel restaurant
- Housekeeping and turndown services
- Valet services
- Wine storage
- Pet sitting and dog walking
- Dry cleaning and car washing



Atlantic Ocean

LEVEL 9 Amenities



500 ATLANTIC'S EXCLUSIVE AND PRIVATE AMENITIES ARE LOCATED ON LEVEL 2 AND LEVEL 9:

- A resort-style pool on each level with private cabanas and lounge chairs
- Ocean Club House
- Oceanfront Fitness Center
- Lounge and Juice Bar
- Yoga and Dance Studio
- Game Rooms and Library
- Massage Rooms
- Media Center
- Direct Access to the Beach from Level 2

Surf, Sand and City: Dazzling Views Come Standard



The residences at 500 Atlantic Condominium are designed to make ultimate use of their spectacular views. Floor-to-ceiling windows immerse the open living spaces in panoramic scenes – the surf and sand from north and south, east over the ocean and west over the city and the Intracoastal Waterway. Impact glass doors and windows, premium detailing and harmonious, contemporary color schemes play off the inherent beauty of the vistas, creating a continuity and flow from the bedroom door to the horizon.

Whether it’s looking out from the world-class penthouses (Floors 31 and 32), a luxury condominium (Floors 10-30), or an oceanfront seaside salon (Floors 2-8), the only thing that can rival the view out there is the view in here.

Incredible views and lavishly appointed interiors create an inspiring living environment.

RESIDENCE A

Floors 10 through 30
Southwest Corner



2 BEDROOMS 2 BATHS
LIVING AREA..... 1,724 SQ. FT.
BALCONY AREA..... 219 SQ. FT.
TOTAL AREA..... 1,943 SQ. FT.

Prices, plans, incentives and terms are subject to change without notice. All features and square footages are approximate and subject to change without notice. The developer reserves the right to make changes to the standard features. Renderings and floor plans are the artist's concepts.

3 BEDROOMS 3 BATHS

Floors 10 through 30

Northwest Corner

RESIDENCE **B**

LIVING AREA..... 2,027 SQ. FT.
BALCONY AREA 292 SQ. FT.
TOTAL AREA..... 2,321 SQ. FT.



3 BEDROOMS 3 BATHS
LIVING AREA..... 2,278 SQ. FT.
BALCONY AREA 229 SQ. FT.
TOTAL AREA..... 2,507 SQ. FT.

RESIDENCE C
Floors 10 through 30
Middle North



ATLANTIC
OCEAN





3 BEDROOMS 3 BATHS
LIVING AREA..... 2,064 SQ. FT.
BALCONY AREA 190 SQ. FT.
TOTAL AREA..... 2,254 SQ. FT.

RESIDENCE D
Floors 10 through 30
Northeast Corner



RESIDENCE E

Floors 10 through 30
Southeast Corner



ATLANTIC OCEAN



3 BEDROOMS 3 BATHS
LIVING AREA..... 2,068 SQ. FT.
BALCONY AREA 194 SQ. FT.
TOTAL AREA..... 2,262 SQ. FT.

Prices, plans, incentives and terms are subject to change without notice. All features and square footages are approximate and subject to change without notice. The developer reserves the right to make changes to the standard features. Renderings and floor plans are the artist's concepts.

RESIDENCE F

Floors 10 through 30
Middle South



ATLANTIC OCEAN



2 BEDROOMS 2 BATHS
LIVING AREA..... 1,507 SQ. FT.
BALCONY AREA 287 SQ. FT.
TOTAL AREA..... 1,794 SQ. FT.

Prices, plans, incentives and terms are subject to change without notice. All features and square footages are approximate and subject to change without notice. The developer reserves the right to make changes to the standard features. Renderings and floor plans are the artist's concepts.

ATLANTIC OCEAN



INTRACOASTAL VIEWS

RESIDENCE A
SOUTHWEST CORNER
2 BEDROOMS, 2 BATHS
LIVING AREA: 1,724 SQ. FT.

RESIDENCE B
NORTHWEST CORNER
3 BEDROOMS, 3 BATHS
LIVING AREA: 2,027 SQ. FT.

RESIDENCE C
CENTER NORTH
3 BEDROOMS, 3 BATHS
LIVING AREA: 2,278 SQ. FT.

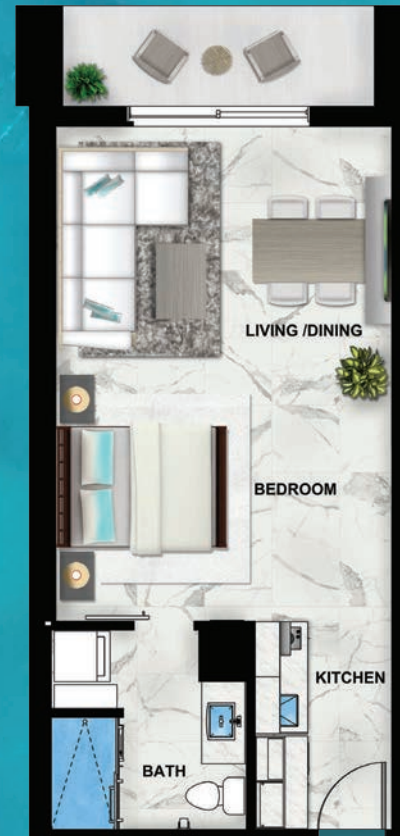
RESIDENCE D
DIRECT OCEANFRONT,
NORTHEAST CORNER
3 BEDROOMS, 3 BATHS
LIVING AREA: 2,064 SQ. FT.

RESIDENCE E
DIRECT OCEANFRONT,
SOUTHEAST CORNER
3 BEDROOMS, 3 BATHS
LIVING AREA: 2,068 SQ. FT.

RESIDENCE F
CENTER SOUTH
2 BEDROOMS, 2 BATHS
LIVING AREA: 1,507 SQ. FT.

SEASIDE SALON H

Floors 2 through 8



STUDIO 1 BATH
LIVING AREA..... 503 SQ. FT.
BALCONY AREA 62 SQ. FT.
TOTAL AREA..... 565 SQ. FT.



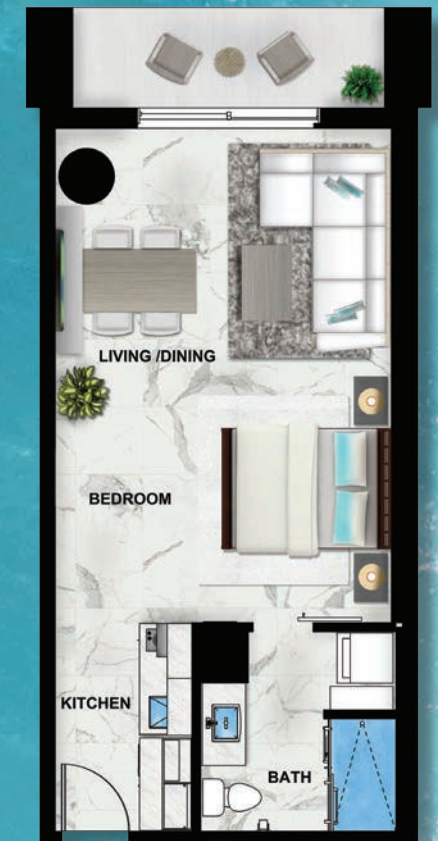
SEASIDE SALON G

Floors 2 through 8

1 BEDROOM 1 BATH
LIVING AREA..... 681 SQ. FT.
BALCONY AREA 62 SQ. FT.
TOTAL AREA..... 743 SQ. FT.

SEASIDE SALON I

Floors 2 through 8



STUDIO 1 BATH
LIVING AREA..... 503 SQ. FT.
BALCONY AREA 62 SQ. FT.
TOTAL AREA..... 565 SQ. FT.

ATLANTIC OCEAN



Life at the Top: Luxury Penthouses



There is the top, and then there is the top of the very top. That's where you will find 500 Atlantic's two premium penthouses.

Penthouse East is an extravagant two-story residence featuring a wrap-around terrace, soaring two-story living and dining rooms, a primary suite decked with both a sauna and massage room, a home theater and home office.

Penthouse West also features a wrap-around terrace and a sauna in the primary suite, as well as a 67-foot wide living and dining space. It's the top of luxury, elevated.

Sweeping views from the top of 500 Atlantic encompass the Intracoastal Waterway to the west and the sand and surf along the beach.

PENTHOUSE WEST

FLOOR 31

SOLD



PENTHOUSE EAST

Lower Level - Floor 31



ATLANTIC OCEAN

EAST

SOLD

4 BEDROOMS, 4.5 BATHS, THEATRE, OFFICE

LIVING AREA..... 8,172 SQ. FT.

BALCONY AREA 2,820 SQ. FT.

TOTAL AREA..... 10,992 SQ. FT.

PENTHOUSE EAST

Upper Level - Floor 32



Prices, plans, incentives and terms are subject to change without notice. All features and square footages are approximate and subject to change without notice. The developer reserves the right to make changes to the standard features. Renderings and floor plans are the artist's concepts.

Luxury Appointments and Premium Finishes



The 500 Atlantic Condominium’s interior design team selected premium finishes, contemporary features and top-of-the-line brand names throughout every residence. Highlights of the standard luxury features are listed below.

Building Features and Security

- Parking garage with privacy entry gates
- Two assigned parking spaces for each residence on floors 10-30
- Guest parking adjacent to lobby
- Resident security fob access to parking garage, lobby and other building entrances
- Humidity-controlled private storage areas
- Emergency generators to offset power outages

Residence Features and Finishes

- Open, flowing floor plans with 10-foot ceilings to maximize ocean and city views on floors 10 and above
- TruStile 8-foot solid core entry and interior doors with Emtek solid brass hardware

- Energy-efficient, impact-resistant windows and floor-to-ceiling sliding glass doors
- Large, open terraces with laminated glass railings to expand the living spaces
- Generous lighting throughout, including designer recessed lighting in living areas
- Technology-ready infrastructure for customized audio, video and home automation
- Pre-wired for home security systems
- Energy-efficient HVAC systems with programmable, digital thermostats
- Spacious laundry room with energy-efficient Bosch front-load washer and dryer, utility sink and built-in cabinetry
- Seaside salons have a stackable washer/dryer

Open Gourmet Kitchens

- Three European color palettes to customize your kitchen, including designer appliance packages, premium cabinetry and exquisite fixtures
- Stainless Steel Appliances:
 - Thermador 36-inch built-in 2-door refrigerator with wood cabinet front
 - Bosch induction cooktop, 36-inch oven and microwave
 - Bosch 800 Series dishwasher with wood cabinet front
- Cabinets:
 - Snaidero cabinetry and accessories from Italy
- Quartz countertops
- Fixtures:
 - Handcrafted 16-gauge Kohler stainless steel sink
 - Danze single handle pull-down faucet
- Flooring:
 - Two, large format porcelain options from Spain

Primary Suites

- LED cove lighting and closet lighting

Luxurious Baths

- Snaidero cabinetry from Italy
- Fixtures
 - Kohler under mount sinks
 - Danze single handle brushed nickel faucets
 - Danze brushed nickel shower head
 - Jacuzzi 67-inch freestanding soaking tub
 - Kohler San Souci commode
- Quartz countertops
- Gorgeous marble or shell mosaic accent walls

In the Seaside Salons the ceiling heights are 8'9". The Seaside Salons do not include Jacuzzi tubs and the appliance package will vary. Please request specific information from the 500 Atlantic Condominium sales representative. All features and square footages are approximate and subject to change without notice. The developer reserves the right to make changes to the standard features and building amenities.



500 Atlantic’s baths include Snaidero cabinetry, Kohler fixtures and a Jacuzzi soaking tub.

Feel All The Excitement of Daytona Beach at Your Feet



It may be a vista, but it's more than just a view. It's the World's Most Famous Beach and all its excitement is at your feet.

Experience Broadway shows just a short walk away at the Peabody Auditorium. A range of nearby restaurants await to satisfy any mood, whether for a night of fine dining or a spontaneous craving. Explore the unique shops and boutiques on scenic Beach Street or unwind in the new Riverfront Park on the Intracoastal Waterway. Golfers will enjoy the array of local golf courses, including LPGA International. By boat, sailors can wander and fish the idyllic waterways along the Intracoastal Waterway and drop anchor at one of the many marinas and yacht clubs.

Adjacent Ormond Beach offers exceptional dining options and a wonderful selection of museums and

galleries, among them The Casements, John D. Rockefeller's winter home. And of course, there's Daytona International Speedway, the world's center for racing of all kinds and stripes.

If you want it, you can find it in Daytona Beach. And exciting Florida getaways are nearby as well, including Disney World Resort in Orlando, Miami Beach and the Palm Beaches to the south and historic St. Augustine and Jacksonville to the north. It's all just a short drive away.



- Restaurants**

 - 1 Hyde Park Prime Steakhouse
 - 2 Hull's Seafood Restaurant
 - 3 Grind Gastropub & Kona Tiki Bar
 - 4 63 Sovereign
 - 5 Starbucks on Atlantic Avenue
 - 6 Starlight Diner
 - 7 Joe's Crab Shack on the Pier
 - 8 The Cellar Restaurant
 - 9 Zen Bistro
 - 10 Chucherias
 - 11 Streamline rooftop bar
 - 12 Crabby's Oceanside Restaurant
 - 13 Landshark Bar and Grill
 - 14 Oyster Pub Sports Bar
 - 15 Anna's Trattoria Italian Restaurant
 - 16 Beach Bucket
 - 17 Rose Villa Restaurant
 - 18 31 Supper Club
 - 19 Gold Leaf Coffee
- Hospitals, Airport & Other Landmarks**

 - 1 Advent Health Daytona Beach
 - 2 Halifax Hospital/France Tower
 - 3 Daytona Beach International Airport
 - 4 Daytona International Speedway
 - 5 Daytona Beach City Hall
 - 6 Daytona Beach Post Office
 - 7 Daytona Beach Police Station
- Shopping, Entertainment & Cultural Venues**

 - 1 Daytona Beach Ocean Center
 - 2 Peabody Auditorium
 - 3 Daytona Beach Pier
 - 4 Daytona Beach Bandshell
 - 5 Hard Rock Hotel
 - 6 News Journal Center
 - 7 Jackie Robinson Ballpark
 - 8 Casements
 - 9 Newly Opened Ormond Art Museum and upgraded Gardens
 - 10 Cici and Hyatt Brown Museum of Art
 - 11 Southeast Museum of Photography
 - 12 Museum of Arts and Sciences
 - 13 Art League of Daytona Beach
 - 14 Ocean Walk Shoppes and Movies
 - 15 Beach Street shops and restaurants
 - 16 Publix shopping center
 - 17 Tangers Outlet Mall
- Golf, Marinas and Parks**

 - 1 LPGA International
 - 2 Club at Pelican Bay
 - 3 Daytona Golf Club
 - 4 Oceans Golf Club
 - 5 Riviera Country Club
 - 6 Halifax Yacht Club
 - 7 Chart House Marina
 - 8 Caribbean Jack's Marina and Restaurant
 - 9 Coquina Marina and Tennis Club
 - 10 Riverfront Park



500 Atlantic Condominium (A) and the Daytona Grande Hotel (B) are steps from the beach, and just minutes from Daytona International Speedway (C), Daytona Beach International Airport (D) and Halifax Health Medical Center (E).

500 ATLANTIC

C O N D O M I N I U M

500atlantic.com

833-500-VIEW (8439)

PRICES, PLANS, INCENTIVES AND TERMS ARE SUBJECT TO CHANGE WITHOUT NOTICE. ALL FEATURES AND SQUARE FOOTAGES ARE APPROXIMATE AND SUBJECT TO CHANGE WITHOUT NOTICE. THE DEVELOPER RESERVES THE RIGHT TO MAKE CHANGES TO THE STANDARD FEATURES, RENDERINGS AND FLOOR PLANS ARE THE ARTIST'S CONCEPTS.

ORAL REPRESENTATIONS CANNOT BE RELIED UPON AS CORRECTLY STATING REPRESENTATIONS OF THE DEVELOPER. FOR CORRECT REPRESENTATIONS, MAKE REFERENCE TO THIS BROCHURE AND TO THE DOCUMENTS REQUIRED BY SECTION 718.503, FLORIDA STATUTES, TO BE FURNISHED BY A DEVELOPER TO A BUYER OR LESSEE.

